



# TAKING ROOT

A Story of Family, Flowers & Ferns





Image Landsat / Copernicus  
Image IBCAO  
Data SIO, NOAA, U.S. Navy, NGA, GEBCO

Google Earth





Image Landsat / Copernicus  
Image IBCAO  
Data SIO, NOAA, U.S. Navy, NGA, GEBCO

Google Earth



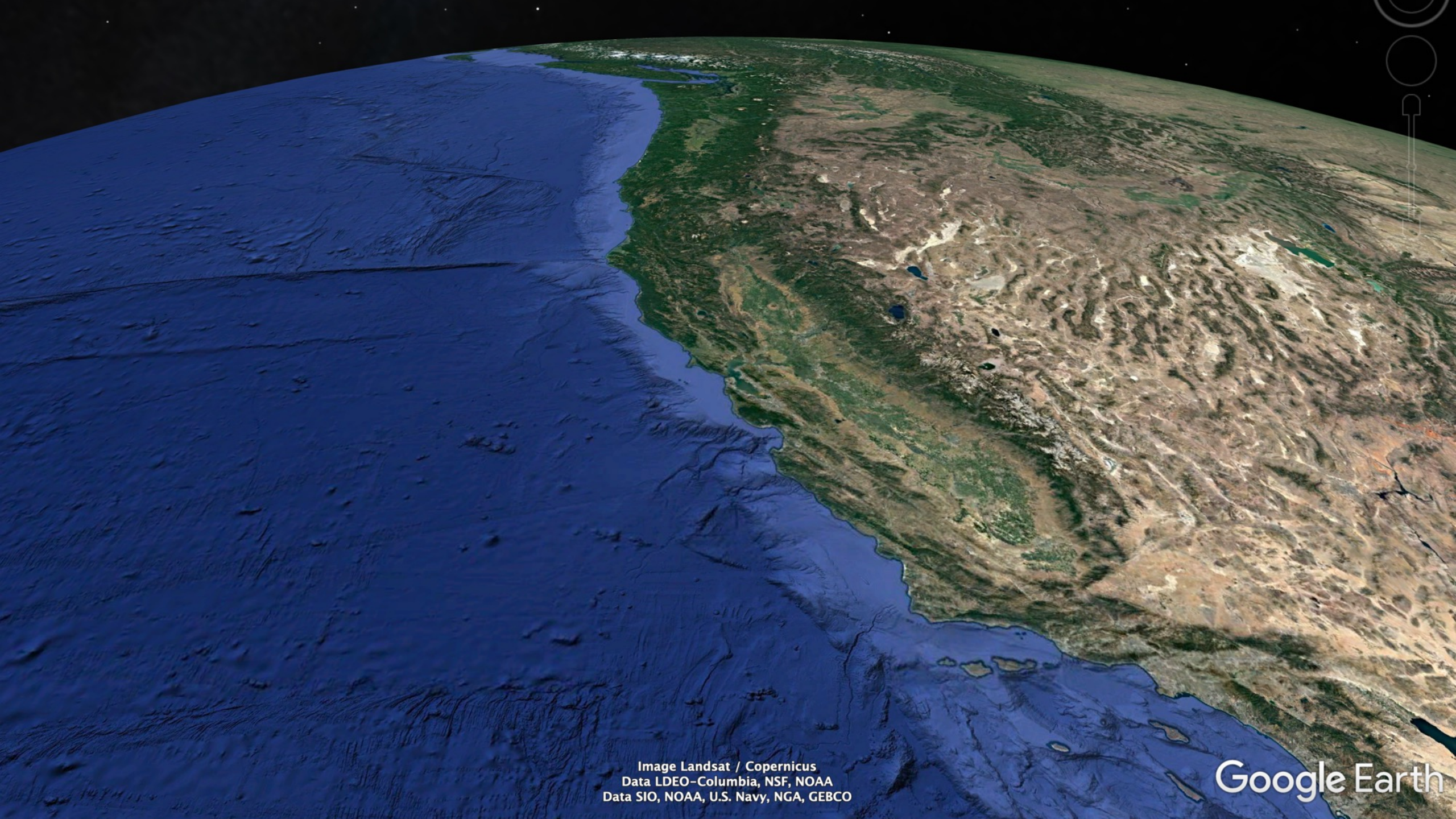


Image Landsat / Copernicus  
Data LDEO-Columbia, NSF, NOAA  
Data SIO, NOAA, U.S. Navy, NGA, GEBCO

Google Earth





Image Landsat / Copernicus  
Data LDEO-Columbia, NSF, NOAA  
Data MBARI  
Data SIO, NOAA, U.S. Navy, NGA, GEBCO

Google Earth



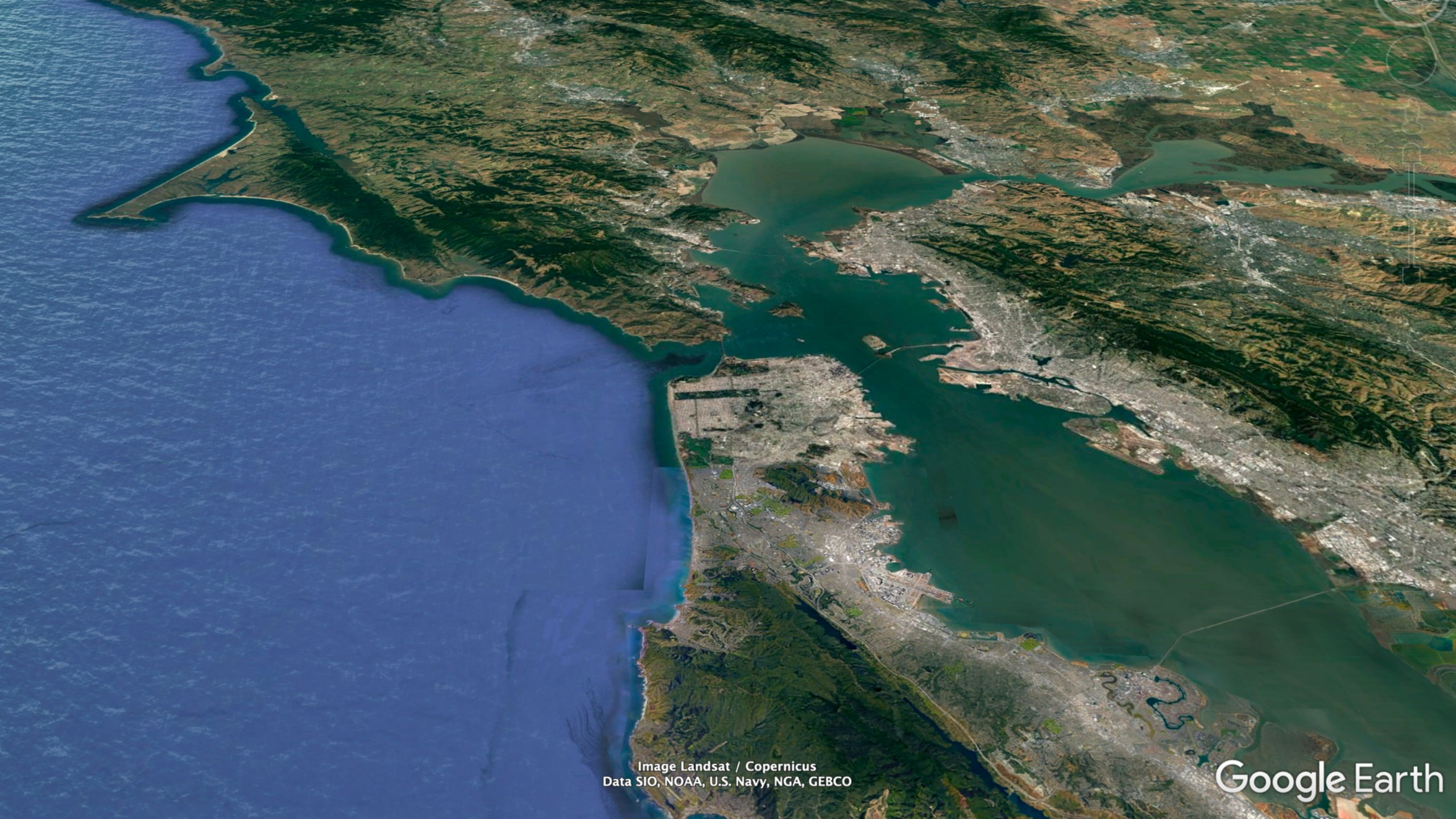


Image Landsat / Copernicus  
Data SIO, NOAA, U.S. Navy, NGA, GEBCO

Google Earth





Image Landsat / Copernicus  
Data CSUMB-SFML, CA OPC

Google Earth





Image Landsat / Copernicus

Google Earth





Data CSUMB SFML, CA OPC

Google Earth





Data CSUMB SFML, CA OPC

Google Earth





Data CSUMB SFML, CA OPC

Google Earth





Data CSUMB SFML, CA OPC

Google Earth

























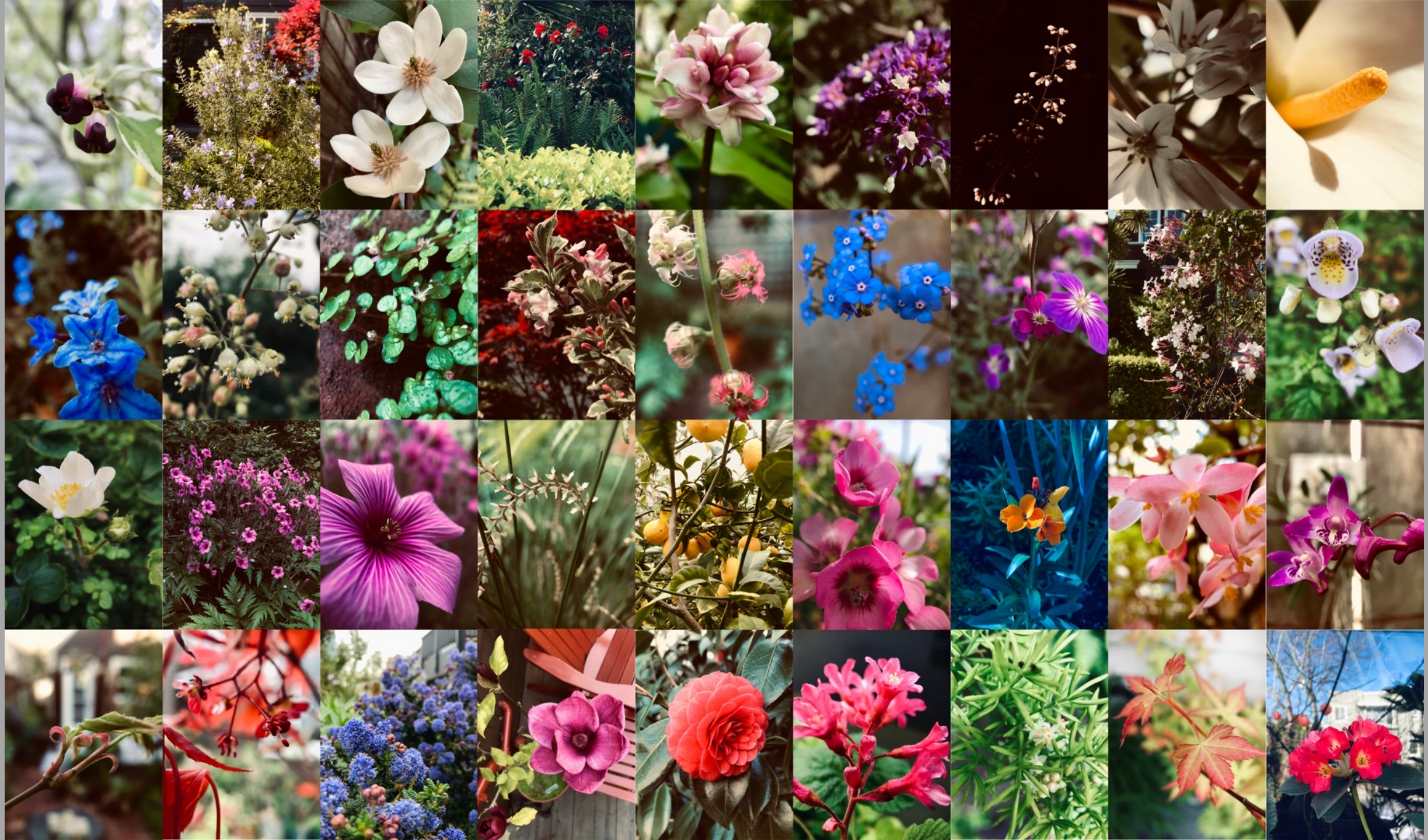




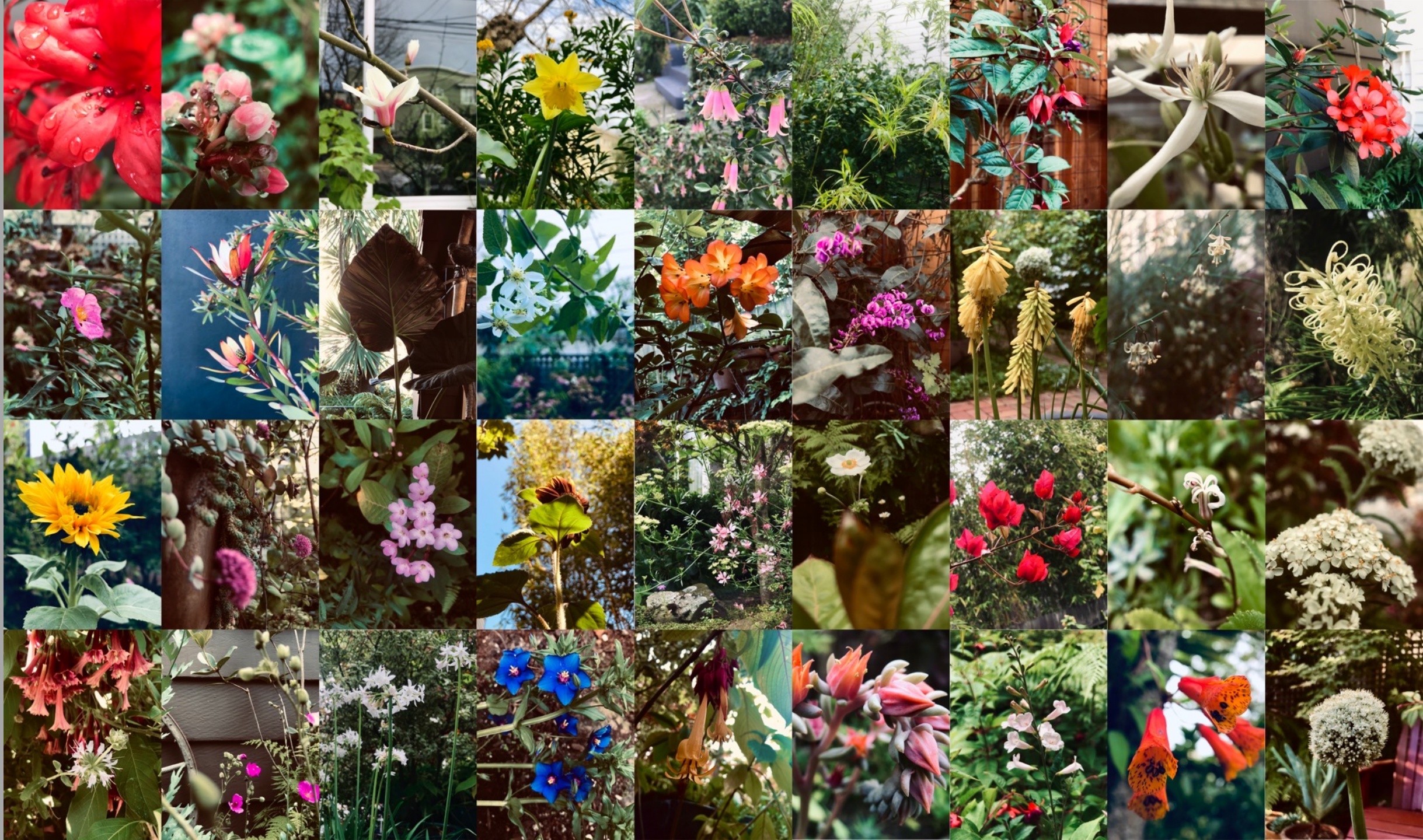




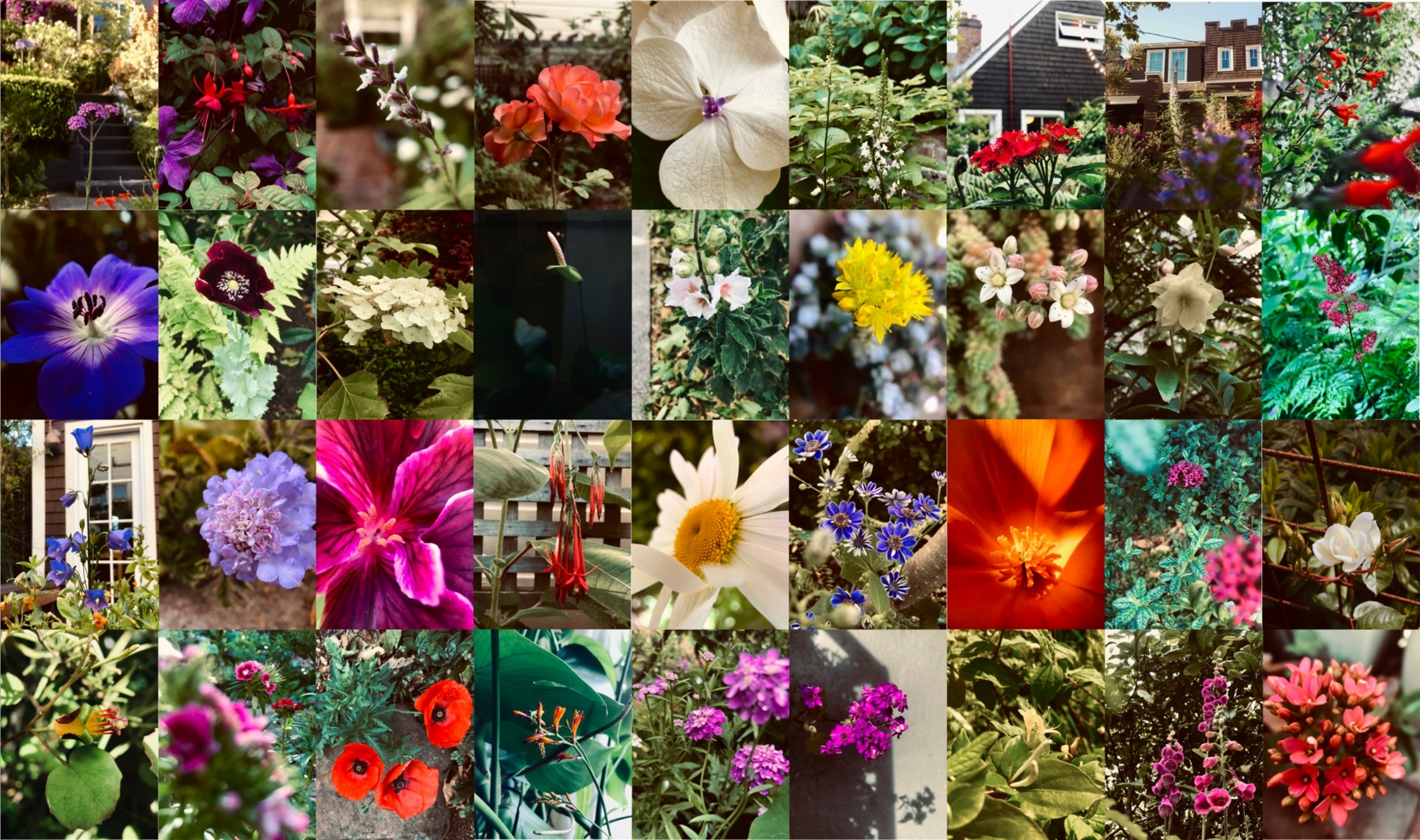




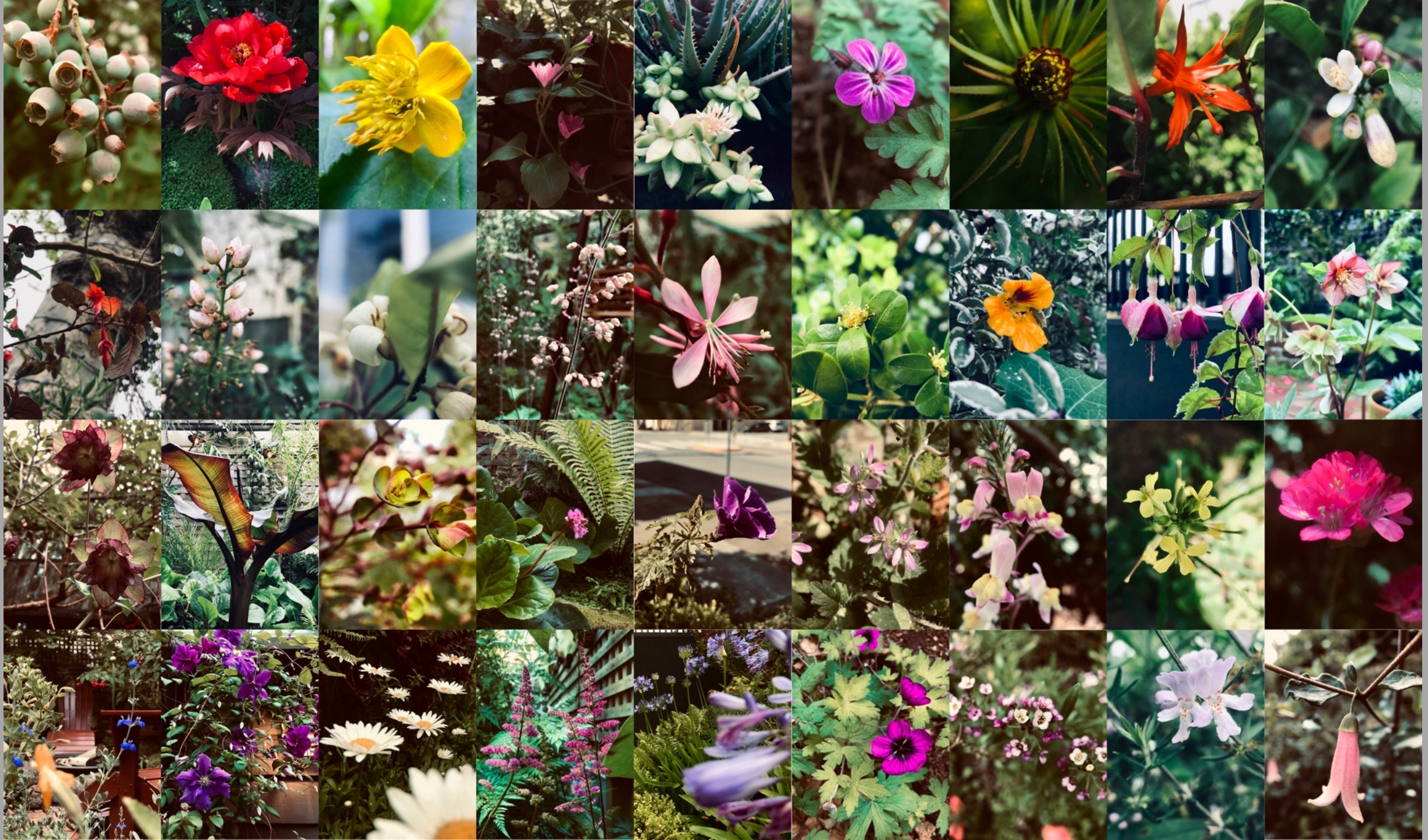




























Madreselva































# BY THE NUMBERS

Year built: 1906

Lot: 2,247 sq ft

Garden: 1,323 sq ft

Years in our care: 10

Plant Orders: 40

Plant Families: 99

Genera: 243

Species/taxa: 363

Individuals: 700+

Indoor plants: 36 + two planted aquariums (85 gallons)

Pots/planters: 170

CA Natives: 35 (10%)

Pteridophytes

- 5 Orders

- 18 Families

- 44 Genus

- 89 Species







Order: *Cyatheales*

Family: *Cyatheaceae* (*Scaly Tree Ferns*)

Genus/Species: *Sphaeropteris exclesa* (*syn Cyathea brownii*)

# NORFOLK ISLAND TREE FERN

- Native Range: Norfolk Island (Australia—off the east coast and half way to Fiji)
- Considered largest fern species in the world
- In wild habitat (subtropical rainforest) can reach 20 meters, with fronds 5 meters in length





Order: *Cyatheales*

Family: *Cyatheaceae* (*Scaly Tree Ferns*)

Genus/Species: *Sphaeropteris cooperi* (*syn Cyathea cooperi*)

# AUSTRALIAN TREE FERN

- Native Range: Australia
- Can reach 15 meters





Order: *Cyatheales*

Family: *Cyatheaceae* (*Scaly Tree Ferns*)

Genus/Species: *Sphaeropteris cooperi* syn *Cyathea tomentosissima*

## DWARF WOOLY TREE FERN

- Native Range: New Guinea
- Grows to 8 feet





Order: *Cyatheales*

Family: *Cyatheaceae* (*Scaly Tree Ferns*)

Genus/Species: *Sphaeropteris medullaris*

## BLACK TREE FERN

- Native Range: New Zealand, SW Pacific
- Can also reach 20 meters, with fronds 5 meters in length





Order: *Cyatheales*

Family: *Dicksoniaceae* (Soft Tree Ferns)

Genus/Species: *Dicksonia antarctica*

# TASMANIAN TREE FERN

- Native Range: Australia, Tasmania





Order	Family	Genus	Species	Common Name
<i>Polypodiales</i>	<i>Aspleniaceae</i>	<i>Asplenium</i>	<i>antiquum</i>	Bird's Nest Fern
		<i>Asplenium</i>	<i>australasicum</i>	Bird's Nest Fern
		<i>Asplenium</i>	<i>bulbiferum</i> x	Hen and Chicken Fern
	<i>Athyriaceae</i>	<i>Athyrium</i>	<i>felix-femina</i>	Lady Fern
		<i>Athyrium</i>	<i>niponicum</i>	Japanese Painted Fern
		<i>Diplazium</i>	<i>proliferum</i>	Mother Fern
	<i>Blechnaceae</i>	<i>Blechnum</i>	<i>brasiliense</i>	Brazilian Dwarf Tree Fern
		<i>Blechnum</i>	<i>gibbum</i> 'Silver Lady'	Dwarf Tree Fern
		<i>Blechnum</i>	<i>occidentale</i>	Hammock Fern
		<i>Blechnum</i>	<i>spicant</i>	Deer Fern
		<i>Doodia</i>	<i>media</i>	Rasp Fern
		<i>Parablechnum</i>	<i>novae-zelandiae</i>	Kiokio
		<i>Woodwardia</i>	<i>radicans</i>	European Chain Fern
		<i>Woodwardia</i>	<i>unigemmata</i>	Jewelled Chain Fern
	<i>Davalliaceae</i>	<i>Davallia</i>	<i>trichomanoides</i>	Rabbit's Foot Fern
		<i>Humata</i>	<i>tyermanii</i>	White Paw Fern
	<i>Didymochlaenaceae</i>	<i>Didymochlaena</i>	<i>truncata</i>	Mahogany Maidenhair
	<i>Dennstaedtiaceae</i>	<i>Microlepia</i>	<i>strigosa</i>	Lace Fern



Order: *Polypodiales*

Family: *Aspleniaceae* (Spleenworts)

Genus/Species: *Asplenium antiquum*

## BIRD'S NEST FERN

- Native Range: Tropical Africa, temperate and tropical Asia
- 2-3 feet





Order: *Polypodiales*

Family: *Aspleniaceae* (Spleenworts)

Genus/Species: *Asplenium australasicum*

## BIRD'S NEST FERN

- Native Range: Australia
- 3-4 feet





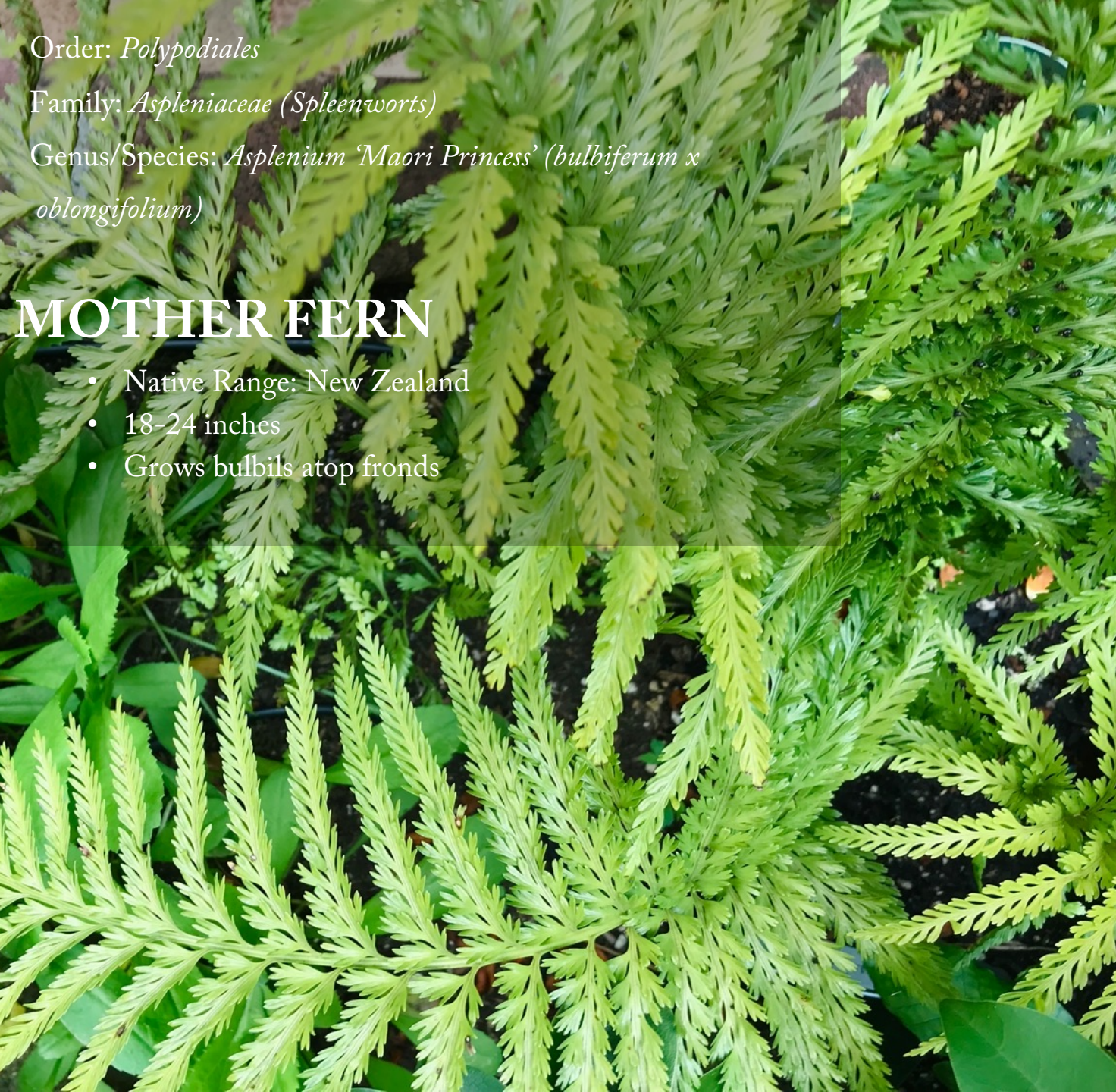
Order: *Polypodiales*

Family: *Aspleniaceae* (Spleenworts)

Genus/Species: *Asplenium* 'Maori Princess' (*bulbiferum* x *oblongifolium*)

## MOTHER FERN

- Native Range: New Zealand
- 18-24 inches
- Grows bulbils atop fronds





Order: *Polypodiales*

Family: *Athyriaceae* (*Lady Ferns*)

Genus/Species: *Athyrium felix-femina*

## LADY FERN

- NATIVE
- Native Range: Temperate Northern Hemisphere
- 18-24 inches
- Deciduous
- Develop short trunks
- Garden volunteer... growing epiphytically on an old log, popping up between bricks





Order: *Polypodiales*

Family: *Blechnaceae* (*Chain Ferns*)

Genus/Species: *Blechnum brasiliense*

# BRAZILIAN DWARF TREE FERN

- Native Range: South America
- 3-4 feet
- New fronds emerge red





Order: *Polypodiales*

Family: *Blechnaceae* (*Chain Ferns*)

Genus/Species: *Blechnum gibbum*

# SILVER LADY DWARF TREE FERN

- Native Range: Fiji, Pacific Islands, New Zealand
- 3-4 feet
- New fronds emerge pink





Order: *Polypodiales*

Family: *Blechnaceae* (Chain Ferns)

Genus/Species: *Blechnum occidentale*

# HAMMOCK FERN

- Native Range: South America, Mexico, West Indies
- 1-2 feet
- New fronds emerge red





Order: *Polypodiales*

Family: *Blechnaceae* (Chain Ferns)

Genus/Species: *Blechnum spicant*

# DEER FERN

- NATIVE
- Native Range: Northwest North America, Europe, NW Asia
- 1-2 feet
- Separate sterile and fertile fronds





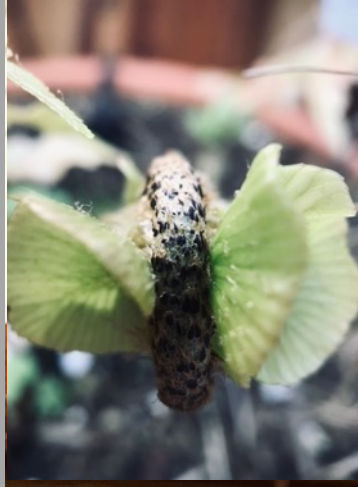
Order: *Polypodiales*

Family: *Blechnaceae* (Chain Ferns)

Genus/Species: *Parablechnum novae-zelandiae*

## KIO KIO, PALM-LEAF FERN

- Native Range: New Zealand
- 2 meters
- New fronds emerge reddish





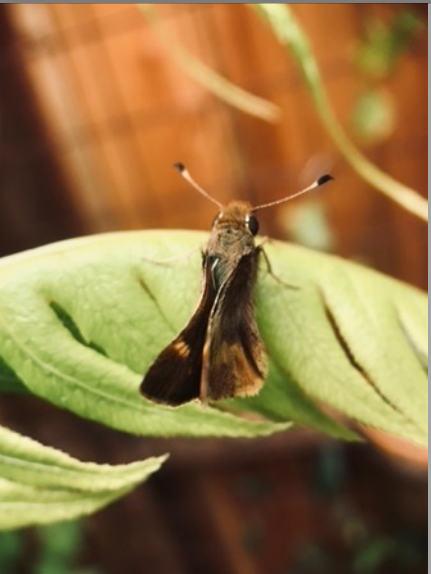
Order: *Polypodiales*

Family: *Blechnaceae* (Chain Ferns)

Genus/Species: *Woodwardia radicans*

## EUROPEAN CHAIN FERN

- Native Range: Japan, China and southwestern Europe
- 4-6 feet
- New fronds emerge reddish
- Rooting plantlets appear on underside of frond tips





Order: *Polypodiales*

Family: *Blechnaceae* (*Chain Ferns*)

Species: *Woodwardia unigemmata*

## JEWELLED CHAIN FERN

- Native Range: East Asia (Japan, China, Himalayas, Philippines)
- 3-4 feet
- New fronds emerge red





Order: *Polypodiales*

Family: *Davaliaceae* (*Rabbit's Foot Ferns*)

Genus/Species: *Davalia trichomanoides*

# RABBIT'S FOOT FERN

- Native Range: Malaysia
- 18 inches





Order: *Polypodiales*

Family: *Davalliaceae* (*Rabbit's Foot Ferns*)

Genus/Species: *Humata tyermanii*

## WHITE PAW FERN

- Native Range: Fiji
- 18 inches





Order: *Polypodiales*

Family: *Dennstaedtiaceae* (Bracken)

Genus/Species: *Microlepia strigosa*

## LACE FERN

- Native Range: Hawaii
- 2-3 feet





Order	Family	Genus	Species	Common Name
<i>Polypodiales</i>	<i>Dryopteridaceae</i>	<i>Cyrtomium</i>	<i>falcatum</i>	Japanese Holly Fern
		<i>Dryopteris</i>	<i>erythrosora</i>	Autumn Fern
		<i>Dryopteris</i>	<i>erythrosora</i> 'Radiance'	Autumn Fern
		<i>Dryopteris</i>	<i>hondoensis</i>	Hondo Wood Fern
		<i>Dryopteris</i>	<i>labordei</i>	Golden Mist Wood Fern
		<i>Dryopteris</i>	<i>lepidopoda</i>	Sunset Fern
		<i>Dryopteris</i>	<i>sieboldii</i>	Siebold's Wood Fern
		<i>Elaphoglossum</i>	<i>lingua</i>	Deer Tongue Fern
		<i>Elaphoglossum</i>	<i>metallicum</i>	Deer Tongue Fern
		<i>Elaphoglossum</i>	<i>peltatum</i>	Peltate Tonguefern
		<i>Polystichum</i>	<i>braunii</i>	Braun's Holly Fern
		<i>Polystichum</i>	<i>munitum</i>	Western Sword Fern
		<i>Rumohra</i>	<i>adiantiformis</i>	Leatherleaf Fern
	<i>Nephrolepidaceae</i>	<i>Nephrolepis</i>	<i>obliterata</i>	Kimberley Queen Fern
		<i>Nephrolepis</i>	<i>cordifolia</i>	Erect Sword Fern
		<i>Nephrolepis</i>	<i>pendula</i>	Long John Pendulant Fern
	<i>Onocleaceae</i>	<i>Matteuccia</i>	<i>struthiopteris</i>	Ostrich Fern
	<i>Osmundaceae</i>	<i>Osmunda</i>	<i>regalis</i> 'Purpurascens'	Royal Fern



Order: *Polypodiales*

Family: *Dryopteridaceae* (Wood Ferns)

Genus/Species: *Cyrtomium falcatum*

## JAPANESE HOLLY FERN

- Native Range: China, Japan, Korea, Taiwan, Vietnam
- 1-2 feet





Order: *Polypodiales*

Family: *Dryopteridaceae* (Wood Ferns)

Genus/Species: *Dryopteris erythrosora*

# AUTUMN FERN

- Native Range: China, Japan, Korea
- 2 feet





Order: *Polypodiales*

Family: *Dryopteridaceae* (Wood Ferns)

Genus/Species: *Dryopteris erythrosora* 'Radiance'

## AUTUMN FERN

- Native Range: NE India, China
- 2 feet





Order: *Polypodiales*

Family: *Dryopteridaceae* (Wood Ferns)

Genus/Species: *Dryopteris hondoensis*

## HONDO WOOD FERN

- Native Range: China, Japan, Korea, Philippines
- 2 feet





Order: *Polypodiales*

Family: *Dryopteridaceae* (Wood Ferns)

Genus/Species: *Dryopteris labordei*

## GOLDEN MIST WOOD FERN

- Native Range: China, Japan, Korea
- 18 inches





Order: *Polypodiales*

Family: *Dryopteridaceae* (*Wood Ferns*)

Genus/Species: *Dryopteris lepidopoda*

## SUNSET FERN

- Native Range: NE India, China
- 2 feet





Order: *Polypodiales*

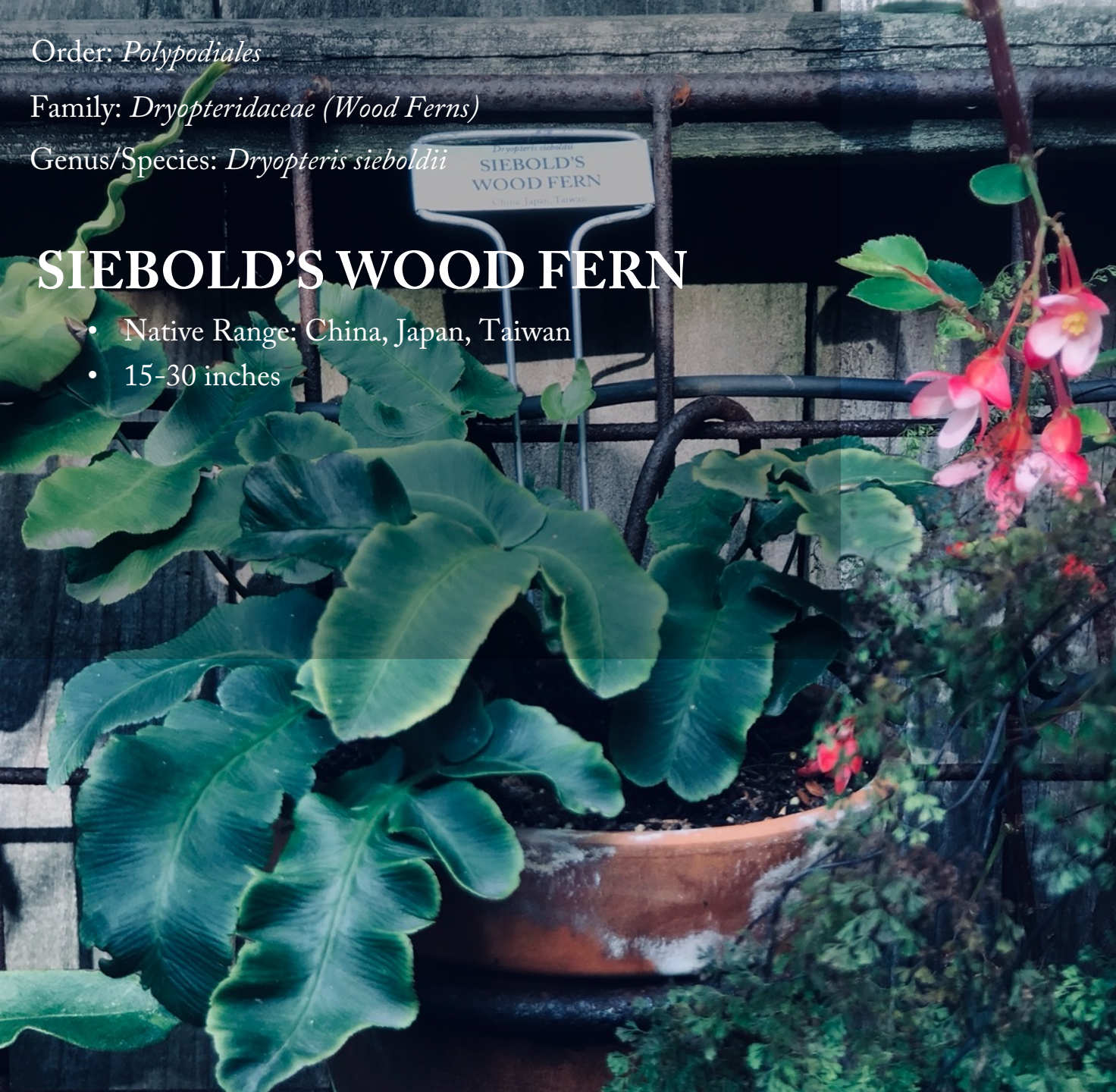
Family: *Dryopteridaceae* (Wood Ferns)

Genus/Species: *Dryopteris sieboldii*

# SIEBOLD'S WOOD FERN

- Native Range: China, Japan, Taiwan
- 15-30 inches

*Dryopteris sieboldii*  
SIEBOLD'S  
WOOD FERN  
China, Japan, Taiwan





Order: *Polypodiales*

Family: *Dryopteridaceae* (Wood Ferns)

Genus/Species: *Elaphoglossum metallicum*, *lingua* & *peltatum*

## DEER TONGUE FERNS

- Native Range: Peru
- 12 inches

## PELTATE TONGUEFERN

- Native Range: Ecuador
- 6 inches





Order: *Polypodiales*

Family: *Dryopteridaceae* (Wood Ferns)

Genus/Species: *Polystichum munitum*

## WESTERN SWORD FERN

- NATIVE
- Native Range: Western North America
- 1-6 feet





Order: *Polypodiales*

Family: *Dryopteridaceae* (Wood Ferns)

Genus/Species: *Rumohra adiantiformis*

# LEATHERLEAF FERN

- Native Range: South America, South Africa, Australia, New Zealand
- 3-4 feet





Order: *Polypodiales*

Family: *Nephrolepidaceae* (*Macho/Sword Ferns*)

Genus/Species: *Nephrolepis cordifolia*

## ERECT SWORD FERN

- Native Range: Asia, Australia, Pacific Islands)
- 2-3 feet





Order: *Polypodiales*

Family: *Nephrolepidaceae* (Macho/Sword Ferns)

Genus/Species: *Nephrolepis obliterata*

# KIMBERLEY QUEEN FERN

- Native Range: Australia
- 3 feet





Order: *Polypodiales*

Family: *Nephrolepidaceae* (Macho/Sword Ferns)

Genus/Species: *Nephrolepis pendula*

# LONG JOHN PENDULANT FERN

- Native Range: Central and South America
- 8 feet





Order: *Polypodiales*

Family: *Onocleaceae* (*Sensitive Ferns*)

Genus/Species: *Matteuccia struthiopteris*

## OSTRICH FERN

- Native Range: Pantropical (SE Asia, Australia, North and South America, Pacific Islands)
- 2-3 feet in cultivation (up to 6 feet in the wild)
- Deciduous





Order: *Polypodiales*

Family: *Osmundaceae* (Royal Ferns)

Genus/Species: *Osmunda regalis* 'Purpurascens'

## ROYAL FERN

- Native Range: Africa, Asia, Europe
- 2-4 feet
- Deciduous





Order	Family	Genus	Species	Common Name
<i>Polypodiales</i>	<i>Polypodiaceae</i>	<i>Platycterium</i>	<i>bifurcatum</i>	Staghorn Fern
		<i>Platycterium</i>	<i>hillii</i> 'Delight'	Staghorn Fern
		<i>Platycterium</i>	<i>veitchii</i>	Staghorn Fern
		<i>Aglaomorpha</i>	<i>coronans</i>	Basket Fern
		<i>Aglaomorpha</i>	<i>cornucopia</i>	Basket Fern
		<i>Aglaomorpha</i>	<i>meyeniana</i>	Bears Paw Fern
		<i>Aglaomorpha</i>	<i>rigidula</i>	Basket Fern
		<i>Goniophlebium</i>	<i>subauriculatum</i>	
		<i>Goniophlebium</i>	<i>subauriculatum</i> 'Knightii'	Lacy Pine Fern
		<i>Microgramma</i>	<i>vaccinifolia</i>	Snakefern
		<i>Microsorium</i>	<i>brachylepis</i> 'Datun'	Short-Scaled Small Sori Fern
		<i>Neolepisorus</i>	<i>fortunei</i>	Green Ribbons
		<i>Niphidium</i>	<i>crassifolium</i>	Graceful Fern
		<i>Phlebodium</i>	<i>aureum</i> 'Mandaianum'	Blue Star Fern
		<i>Phlebodium</i>	<i>aureum</i> 'Glaucum'	Hare Foot Fern



Order: *Polypodiales*

Family: *Polypodiaceae* (Common Ferns)

Genus/Species: *Platycerium bifurcatum*

# STAGHORN FERN

- Native Range: Australia, Java, New Guinea
- 3 feet
- Epiphytic





Order: *Polypodiales*

Family: *Polypodiaceae* (Common Ferns)

Genus/Species: *Platycerium veitchii*

# STAGHORN FERN

- Native Range: Australia
- 3 feet
- Epiphytic





Order: *Polypodiales*

Family: *Polypodiaceae* (Common Ferns)

Genus/Species: *Aglaomorpha coronans*

## BASKET FERN

- Native Range: Tropical Asia
- 4-6 feet
- Epiphytic





Order: *Polypodiales*

Family: *Polypodiaceae* (*Common Ferns*)

Genus/Species: *Aglaomorpha cornucopia*

## BASKET FERN

- Native Range: Philippines
- 1 meter
- Epiphytic





Order: *Polypodiales*

Family: *Polypodiaceae* (Common Ferns)

Genus/Species: *Aglaomorpha rigidula* 'Whitei'

## BASKET FERN

- Native Range: Papua New Guinea
- 1 meter
- Epiphytic





Order: *Polypodiales*

Family: *Polypodiaceae* (Common Ferns)

Genus/Species: *Goniophlebium subauriculatum*

## CATERPILLAR FERN

- Native Range: Tropical Asia
- 2 meters
- Epiphytic
- Deciduous in SF





Order: *Polypodiales*

Family: *Polypodiaceae* (Common Ferns)

Genus/Species: *Goniophlebium subauriculatum* 'Knightii'

## LACY PINE FERN

- Native Range: Tropical Asia
- 2 meters
- Epiphytic
- Deciduous in SF





Order: *Polypodiales*

Family: *Polypodiaceae* (Common Ferns)

Genus/Species: *Microgramma vacciniifolia*

## SNAKEFERN

- Native Range: South America
- 2-6 inches
- Epiphytic





Order: *Polypodiales*

Family: *Polypodiaceae* (Common Ferns)

Genus/Species: *Microsorium brachylepis* 'Datun'

## SHORT-SCALED SMALL SORI FERN

- Native Range: Taiwan
- 6 inches





Order: *Polypodiales*

Family: *Polypodiaceae* (Common Ferns)

Genus/Species: *Neolepisorus fortunei*

## GREEN RIBBONS

- Native Range: China, Malaysia
- 18 inches





Order: *Polypodiales*

Family: *Polypodiaceae* (Common Ferns)

Genus/Species: *Phlebodium aureum* 'Mandaianum'

## BLUE STAR FERN

- Native Range: Caribbean, northern South America
- 1-3 feet
- Epiphytic





Order: *Polypodiales*

Family: *Polypodiaceae* (*Common Ferns*)

Genus/Species: *Phlebodium aureum* '*Glaucum*'

## HARE FOOT FERN

- Native Range: Mexico
- 3-4 feet
- Epiphytic





Order	Family	Genus	Species	Common Name
<i>Polypodiales</i>	<i>Polypodiaceae</i>	<i>Phlebosia</i>	<i>x</i>	Nicolas Diamond
		<i>Polypodium</i>	<i>calirhiza</i>	Nested Polypody
		<i>Polypodium</i>	<i>glycyrrhiza</i>	Licorice Fern
		<i>Polypodium</i>	<i>scouleri</i>	Leather Polypody
		<i>Pyrrosia</i>	<i>hastata</i>	Felt Fern
		<i>Pyrrosia</i>	<i>lingua</i>	Tongue Fern
		<i>Pyrrosia</i>	<i>lingua</i> ‘Ogon Nishiki’	Gold Brocade Tongue Fern
		<i>Pyrrosia</i>	<i>polydactyla</i>	Five-Fingered Taiwanese Tongue Fern
		<i>Selliguea</i>	<i>feei</i>	
	<i>Pteridaceae</i>	<i>Adiantum</i>	<i>macrophyllum</i> ‘ <i>Variegatum</i> ’	Largeleaf Maidenhair Fern
		<i>Adiantum</i>	<i>aleuticum</i>	Five-Fingered Maidenhair Fern
		<i>Adiantum</i>	<i>peruviana</i>	Silver Dollar Maidenhair
		<i>Adiantum</i>	<i>raddianum</i>	Delta Maidenhair Fern
		<i>Adiantum</i>	<i>raddianum</i> ‘ <i>Micropinnulum</i> ’	Dwarf Maidenhair Fern



Order: *Polypodiales*

Family: *Polypodiaceae* (Common Ferns)

Genus/Species: *Phlebosia* x

## NICOLAS DIAMOND FERN

- 12-20 inches
- Cross between *Phlebodium aureum* 'Mandaianum' and *Pyrrosia lingua* 'Cristata'





Order: *Polypodiales*

Family: *Polypodiaceae* (Common Ferns)

Genus/Species: *Polypodium calirhiza*

## NESTED POLYPODY

- NATIVE
- Native Range: Western North America
- 1-2 feet
- Sometimes epiphytic





Order: *Polypodiales*

Family: *Polypodiaceae* (Common Ferns)

Genus/Species: *Polypodium glycyrrhiza*

## LICORICE FERN

- NATIVE
- Native Range: North America
- 1-2 feet
- Epiphytic
- Summer deciduous





Order: *Polypodiales*

Family: *Polypodiaceae* (Common Ferns)

Genus/Species: *Polypodium scolieri*

## LEATHER POLYPODY

- NATIVE
- Native Range: Coastal Western North America
- 6-20 inches
- Sometimes epiphytic





Order: *Polypodiales*

Family: *Polypodiaceae* (Common Ferns)

Genus/Species: *Pyrrosia hastata*

## FELT FERN

- Native Range: China, Japan, Korea
- 8-18 inches
- Sometimes epiphytic





Order: *Polypodiales*

Family: *Polypodiaceae* (Common Ferns)

Genus/Species: *Pyrrosia lingua* 'Ogon Nishiki'

# GOLD BROCADE TONGUE FERN

- Native Range: Japan
- 12 inches
- Sometimes epiphytic





Order: *Polypodiales*

Family: *Polypodiaceae* (Common Ferns)

Genus/Species: *Pyrrosia polydactyla*

## FIVE-FINGERED TAIWANESE TONGUE FERN

- Native Range: Taiwan
- 12 inches
- Sometimes epiphytic





Order: *Polypodiales*

Family: *Polypodiaceae* (Common Ferns)

Genus/Species: *Selliguea feei*

## SELLIGUEA FERN

- Native Range: Indonesia
- 6 inches





Order: *Polypodiales*

Family: *Pteridaceae* (Brake Ferns)

Genus/Species: *Adiantum aleuticum* (formerly *pedatum*)

# FIVE-FINGERED MAIDENHAIR FERN

- NATIVE
- Native Range: North America, Asia
- 1-2 feet





Order: *Polypodiales*

Family: *Pteridaceae* (*Brake Ferns*)

Genus/Species: *Adiantum peruviana*

# SILVER DOLLAR MAIDENHAIR FERN

- Native Range: Peru
- 18-36 inches





Order: *Polypodiales*

Family: *Pteridaceae* (Brake Ferns)

Genus/Species: *Adiantum raddianum*

## DELTA MAIDENHAIR FERN

- Native Range: Tropical Americas, West Indies
- 1-2 feet





Order: *Polypodiales*

Family: *Pteridaceae* (Brake Ferns)

Genus/Species: *Adiantum raddianum* 'Micropinnulum'

## DWARF MAIDENHAIR FERN

- Native Range: Himalayas
- 12 inches





Order	Family	Genus	Species	Common Name
<i>Polypodiales</i>	<i>Pteridaceae</i>	<i>Coniogramme</i>	<i>emeiensis</i>	Striped Mt. Emei Bamboo Fern
		<i>Hemionitis</i>	<i>arifolia</i>	Heart Fern
		<i>Pteris</i>	<i>argyraea</i>	Silver Brake Fern
		<i>Pteris</i>	<i>aspericaulis</i>	Tricolor Fern
		<i>Pteris</i>	<i>cretica</i>	Cretan Brake Fern
		<i>Pteris</i>	<i>quadriaurita</i> 'Flame'	Painted Brake Fern
		<i>Pellaea</i>	<i>cordifolia</i>	Heartleaf Cliffbrake
		<i>Pellaea</i>	<i>falcata</i>	Sickle Fern
		<i>Pellaea</i>	<i>rotundifolia</i>	Button Fern
<i>Salvinales</i>	<i>Marsileaceae</i>	<i>Marsilea</i>	<i>mutica</i>	Variegated Water Clover
		<i>Azolla</i>	<i>caroliniana</i>	Fairy Moss
		<i>Salvinia</i>	<i>minima</i>	Water Spangles
		<i>Salvina</i>	<i>natans</i>	Floating Fern
<i>Sellaginellales</i>	<i>Sellaginellaceae</i>	<i>Sellaginella</i>	?	Spikemoss
<i>Equisetales</i>	<i>Equisetaceae</i>	<i>Equisetum</i>	<i>hyemale</i>	Rough Horsetail
		<i>Equisetum</i>	<i>giganteum</i>	El Tabacal



Order: *Polypodiales*

Family: *Pteridaceae* (Brake Ferns)

Genus/Species: *Coniogramme emeiensis*

## GOLDEN ZEBRA FERN

- Native Range: China
- 1-2 feet





Order: *Polypodiales*

Family: *Pteridaceae* (Brake Ferns)

Genus/Species: *Hemionitis arifolia*

## HEART FERN

- Native Range: Tropical Asia
- 6-10 inches





Order: *Polypodiales*

Family: *Pteridaceae* (Brake Ferns)

Genus/Species: *Pteris argyraea*

## SILVER BRAKE FERN

- Native Range: SE Asia
- 1-3 feet





Order: *Polypodiales*

Family: *Pteridaceae* (Brake Ferns)

Genus/Species: *Pteris aspericaulis*

## TRICOLOR FERN

- Native Range: Thailand, India, Myanmar, China
- 9 inches





Order: *Polypodiales*

Family: *Pteridaceae* (*Brake Ferns*)

Genus/Species: *Pteris cretica*

## CRETAN BRAKE FERN

- Native Range: Europe, Asia, Africa
- 30 inches





Order: *Polypodiales*

Family: *Pteridaceae* (Brake Ferns)

Genus/Species: *Pteris quadriaurita* 'Flame'

## PAINTED BRAKE FERN

- Native Range: SE Asia
- 1-2 feet





Order: *Polypodiales*

Family: *Pteridaceae* (Brake Ferns)

Genus/Species: *Pellaea cordifolia*

# HEARTLEAF CLIFFBRAKE FERN

- Native Range: Southern United States, Mexico
- 12-18 inches





Order: *Polypodiales*

Family: *Pteridaceae* (Brake Ferns)

Genus/Species: *Pellaea falcata*

## SICKLE FERN

- Native Range: Australia
- 12 inches





Order: *Polypodiales*

Family: *Pteridaceae* (Brake Ferns)

Genus/Species: *Pellaea rotundifolia*

## BUTTON FERN

- Native Range: New Zealand
- 6-12 inches





Order: *Salviniales*

Family: *Marsileaceae* (*Water Clovers*)

Genus/Species: *Marsilea mutica*

## VARIEGATED WATER CLOVER

- Native Range: Australia, New Caledonia
- 6 inches

Order: *Salviniales*

Family: *Salviniaceae* (*Water Ferns*)

Genus/Species: *Azolla caroliniana*

## FAIRY MOSS

- Native Range: Americas
- 1-2 cm





Order: *Salviniales*

Family: *Salviniaceae (Water Ferns)*

Genus/Species: *Salvinia minima*

## WATER SPANGLES

- Native Range: South America, Mesoamerica, West Indies
- 1-2 cm

Order: *Salviniales*

Family: *Salviniaceae (Water Ferns)*

Genus/Species: *Salvinia natans*

## FLOATING FERN

- Native Range: Africa, Asia, Europe
- 1-2 cm





AND ALL THOSE WHO  
COULDN'T BE WITH US ... R.I.P.

*Sadleria cyatheoides*

*Blechnum penna-marina*

*Platycterium superbum*

*Aglaomorpha meyeniana*

*Cheilanthes argentea*

*Dryopteris stenolepis*

*Microsorium diversifolium*

*Asplenium ebenoides*

*Dryopteris erythrosora* 'Koidzumiana'

*Salvinia cucullata*

*Cibotium barometz*

*Stenochlaena tenuifolia*

